

# R13100

## ROTATING TELEHANDLER



### KEY FEATURES & BENEFITS

- 3-in-1 Capability: Along with material handling, rotating telehandlers function as mobile elevating work platforms and rough-terrain cranes.
- Confidence-Inspiring Technology: Features automatic attachment recognition, a Load Management Information System (LMIS) and Load Stability Indicator (LSI).
- 360-Degree Continuous Rotation: Full rotation of the upper frame allows for both horizontal and vertical lifting.
- Standard Attachments and Accessories: 48-in standard carriage and forks, outrigger pads, LED worklights, and boom camera.

### ATTACHMENTS

General Purpose Bucket	94.5-in, 2.0-cu yd
Truss Boom	8-ft, 2640-lb capacity / 2.4-m, 1,200-kg capacity
Truss Boom with Winch	9-ft / 2.7-m, 2,000-lb or 3,300-lb capacity / 900-kg or 1,500-kg capacity
Truss Boom with Winch Standard Carriage	16-ft, 1,300-lb capacity / 4.8-m, 600-kg capacity
Fork Positioning Carriage	48-in / 1.2-m
360 Degree Rotating Carriage	48-in, 5,500-lb capacity / 1.2-m, 2,500-kg capacity
Work Platform	7-ft, 660-lb capacity / 2.1-m, 300-kg capacity
Extendable Trilateral Work Platform	8-ft to 13-ft 6-in / 2.4-m to 4.1-m
Coupler Mounted Winch	660-lb or 1,765-lb capacity / 300-kg or 800-kg
Coupler Mounted Hook	11,000-lb / 5,000-kg
Mixing Bucket	13,200-lb / 6,000-kg
Hydraulic Opening Ladle	1,690-lb / 768-kg max capacity
	2,904-lb / 1,320-kg max capacity

### ACCESSORIES & OPTIONS

- Brick Guard
- Dual Auxiliary Hydraulics
- White Noise Back Up Alarm
- Boom Brushes
- Hydraulic Coupler
- Woodcracker Ready\*

\*For use with Westtech Woodcracker CS 750 Smart

### STANDARD SPECIFICATIONS

#### Performance

Rated Capacity	13,200-lb / 6,000-kg
Maximum Lift Height	97-ft / 29.6-m
Load at Max Height	5,500-lb / 2,500-kg
Maximum Forward Reach	86-ft / 26-m
Load at Max Reach	440-lb / 200-kg
Frame Leveling	±6 Degrees
Lift Speed Up	16 seconds
Lift Speed Down	10.1 seconds
Boom Speed – Extend	29 seconds
Boom Speed – Retract	14 seconds
Top Travel Speed (Foam-Filled)	12.4 mph / 20 km/h
Top Travel Speed (Air Tires)	24.5 mph / 40 km/h
Drawbar Pull	22,500-lb / 100-kN
Outside Turning Radius	14-ft 5-in / 4.4-m
Operating Weight	52,070-lb / 23,620-kg

#### Engine

Make and Model	FPT F4HGE413K*V012
No. of Cylinders	4
Displacement	274 cu in / 4.5 L
Gross Power Basic	168 hp / 125 kW
Maximum Torque @ 1,500 rpm	524 lb-ft / 710 Nm
Fuel Tank Capacity	58.1 gal / 220 L

#### Transmission

Hydrostatic 2-speed

#### Axles

Trunnion mounted planetary 35-Degree steer axles  
High bias limited slip differential on front axle

#### Brakes

Service brakes are inboard wet disc brake on front and rear axles and include inching. Parking brakes are wet disc spring-applied hydraulic release on front axle.

#### Tires

Standard	Foam Filled Tires AGP23 18 x 22.5 Lug Tread
Optional	Air Tires AE77 445/65 R22.5 Turf Tread Air Tires AGP23 18 x 22.5 Lug Tread

#### Standard Features

- 3-in Seatbelt
- Adjustable Seat
- Boom Mounted Camera System
- Certified ROPS/FOPS Structure
- Dual Joystick Controls
- Enclosed Cab
- Horn
- Heat and Air Conditioning
- LED Worklight Package
- LED Motion / Amber Beacon (CS550) with ClearSky Smart Fleet™ Hardware
- Outrigger Pads
- Retractable Sunscreen
- Reversing Camera
- Road Lights
- Tilt & Auxiliary Hydraulics on Joystick

#### Steering 4-Wheel

Power Steering  
Operator selectable 4-Wheel Circle, 4-Wheel Crab, 2-Wheel Front

#### Instruments

- Hourmeter
- Fuel Gauge
- Engine Oil Pressure Gauge
- Voltmeter
- DEF Gauge
- Temperature Gauge

#### Hydraulic System-Implement

Capacity	84.5 gal / 320 L
Max. Auxiliary Flow to the Boom Head	211 gpm / 80 lpm
Load Sense Piston Pump. Auxiliary hydraulics used for all attachments equipped with cylinders or other hydraulic components.	

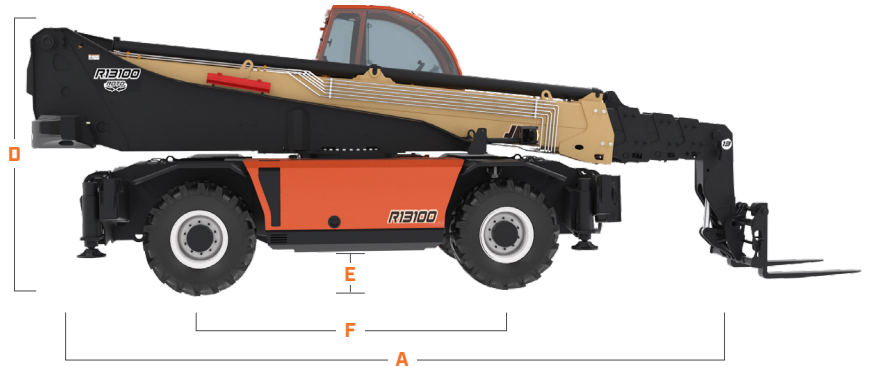
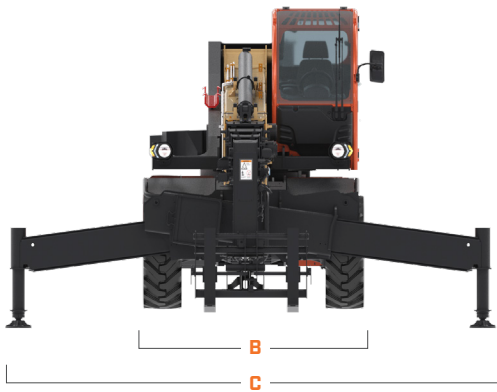
# R13100

ROTATING TELEHANDLER



## DIMENSIONS

All dimensions are approximate

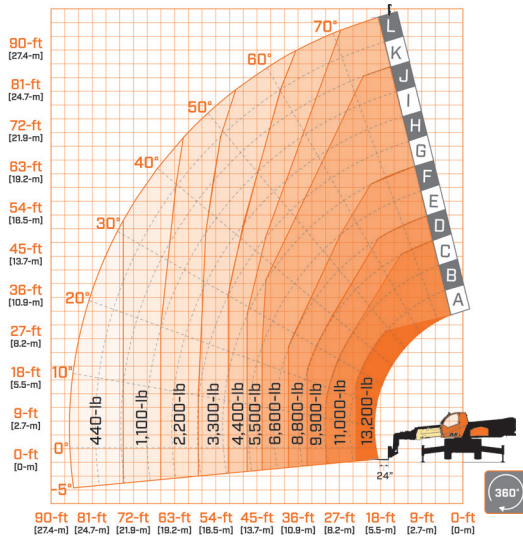


- A.** Machine Length 330.7-in / 8400-mm
- B.** Machine Width 98.4-in / 2500-mm
- C.** Machine Width (outriggers fully deployed) 221.5-in / 5625-mm

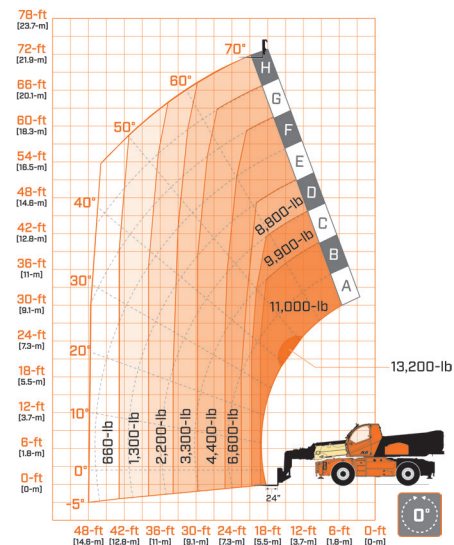
- D.** Machine Height 121.9-in / 3095-mm
- E.** Ground Clearance 16.5-in. / 420-mm
- F.** Wheelbase 129.9-in / 3300-mm

## LOAD CHART

Outriggers Down



Outriggers Up



We provide coverage for one (1) full year on the entire machine, two (2) full years or 2,000 hours on the drivetrain and cover all specified major structural components for five (5) years. Due to continuous product improvements, we reserve the right to make specification and/or equipment changes without prior notification.



JLG INDUSTRIES, INC.  
Toll-free US 877-JLG-LIFT  
JLG.com

An Oshkosh Corporation Company