

# 1644

TELEHANDLER



## Performance

|                             |             |           |
|-----------------------------|-------------|-----------|
| Rated Capacity              | 15,650 lb   | 7,100 kg  |
| Maximum Lift Height         | 43 ft 7 in. | 13.28 m   |
| Load at Max Height          | 6,750 lb    | 3,062 kg  |
| Maximum Forward Reach       | 31 ft 1 in. | 9.47 m    |
| Load at Max Reach           | 2,000 lb    | 907 kg    |
| Frame Leveling              | 8 degrees   |           |
| Lift Speed (boom retracted) |             |           |
| Up                          | 18.3 sec    |           |
| Down                        | 13.6 sec    |           |
| Boom Speed                  |             |           |
| Extended                    | 15.8 sec    |           |
| Retracted                   | 12.3 sec    |           |
| Top Travel Speed            | 20 mph      | 32 kph    |
| Drawbar Pull (loaded)       | 23,000 lb   | 102 kN    |
| Outside Turning Radius      | 13 ft 2 in. | 4.01 m    |
| Operating Weight            | 33,660 lb   | 15,265 kg |

## Standard Specifications

### Engine

|                           |                |        |
|---------------------------|----------------|--------|
| Make and Model            | Deutz TCD 3.6L |        |
| No. of Cylinders          | 4              |        |
| Displacement              | 220 cu in.     | 3.6 L  |
| Gross Basic Power         | 134 hp         | 100 kW |
| Maximum Torque @ 2200 rpm | 369 lb-ft      | 500 Nm |
| Fuel Tank Capacity        | 39 gal.        | 148 L  |

### Transmission

Hydrostatic 2-speed

### Axles

Trunnion mounted planetary 45 degree steer axles.  
Integral steer cylinder.  
High bias limited slip differential on front axle.

### Brakes

Service brakes are inboard wet disc brake on front and rear axles and include inching.  
Parking brakes are wet disc spring applied hydraulic release on front axle.

### Tires

|          |             |
|----------|-------------|
| Standard | 17.5-25 SGG |
| Optional | Foam-Filled |

### Cab

- Certified ROPS/FOPS structure
- Horn
- Tilt & auxiliary hydraulics on joystick
- Adjustable seat
- Single joystick controls
- Anti-theft
- Enclosed cab
- Tilt steering column
- Retractable sunscreen

### Steering 4-Wheel

Hydraulic power steering  
Operator selectable 4-wheel circle, 4-wheel crab, 2-wheel front

### Instruments

- Volt meter
- Hourmeter
- Engine oil pressure gauge
- Temperature gauge
- Fuel gauge
- DEF gauge

### Hydraulic System-Implement

|          |        |       |
|----------|--------|-------|
| Capacity | 67 gal | 255 L |
|----------|--------|-------|

Load sense piston pump. Auxiliary hydraulics used for all attachments equipped with cylinders or other hydraulic components.

## Accessories & Options

- Auxiliary Electrics
- Hydraulic Coupler
- Road Lights
- Fenders
- Air Conditioning
- Brick Guards
- Work Lights
- Positive Air Shut Off
- Rotating Beacon
- Roof Wiper
- Reversing Fan
- Ride Control
- Reverse Sensing System
- Boom Brushes
- Dual Auxiliary Hydraulics
- Arctic Package
- Secondary Steering
- Boom Float
- Multi-Function Display with Reversing Camera
- White Noise Back-up Alarm
- Multiple Seat Options
- SmartLoad Technology

## Attachments

|                                |                           |                             |
|--------------------------------|---------------------------|-----------------------------|
| Standard Carriage              | 60 in.                    | 1.5 m                       |
|                                | 72 in.                    | 1.8 m                       |
|                                | 87 in.                    | 2.2 m                       |
| Dual Fork Positioning Carriage | 72 in.                    | 1.8 m                       |
| Side-Shift Carriage            |                           |                             |
| with Dual Fork Positioning     | 72 in.                    | 1.8 m                       |
| General Purpose Bucket         | 94 in., 2.6 cu yd         | 2.38 m, 1.98 m <sup>3</sup> |
| Light Material Bucket          | 94 in., 5.2 cu yd         | 2.38 m, 3.97 m <sup>3</sup> |
| Multipurpose 4-in-1 Bucket     | 94 in., 1.3 cu yd         | 2.38 m, 0.99 m <sup>3</sup> |
| Grapple Bucket                 | 94 in., 1.7 cu yd         | 2.38 m, 1.29 m <sup>3</sup> |
| Material Handling Arm          | 16,750 lb Capacity        | 7,598 kg                    |
| Hook, Coupler-mounted          | 16,750 lb Capacity        | 7,598 kg                    |
| Winch, Coupler-mounted         | 8,000 lb                  | 3,629 kg                    |
| Bale Cradle, Round Bale        | 7,000 lb Capacity         | 3,175 kg                    |
| Bale Clamp, Square Bale        | 10,000 lb Capacity        | 4,536 kg                    |
| Pipe Grapple                   | 96 in., 8,000 lb Capacity | 2.4 m, 3,629 kg             |
| Log Handler                    | 80 in., 8,000 lb Capacity | 2.03 m, 3,629 kg            |
| Steel Coil Handler             | 16,750 lb Capacity        | 7,598 kg                    |
| Lifting Hook, Fork-mounted     | 15,000 lb Capacity        | 6,804 kg                    |
| Extendable Truss, Fork-mounted | 8,000 lb Capacity         | 3,629 kg                    |

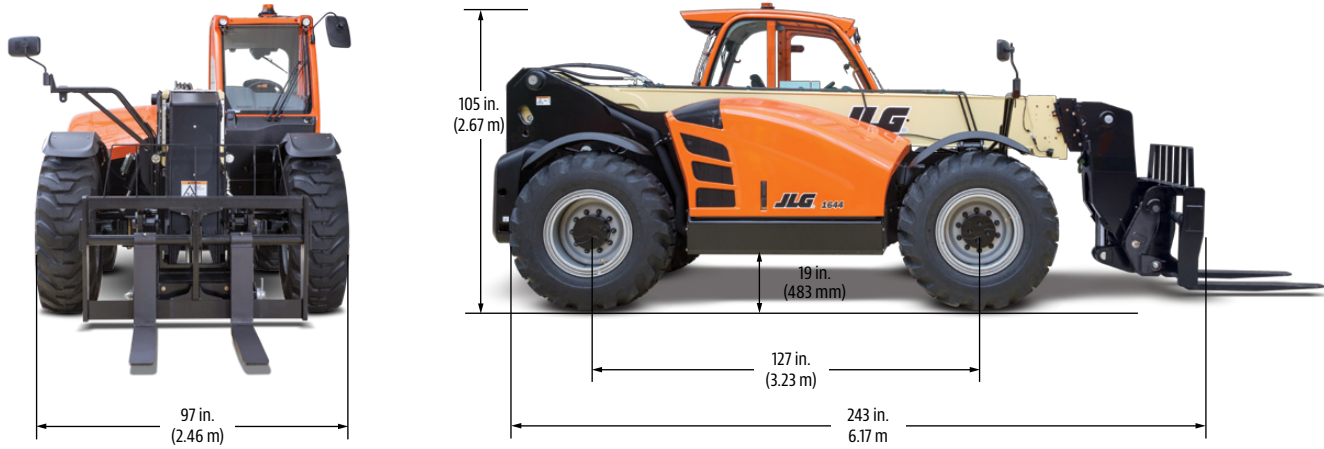
# 1644

TELEHANDLER

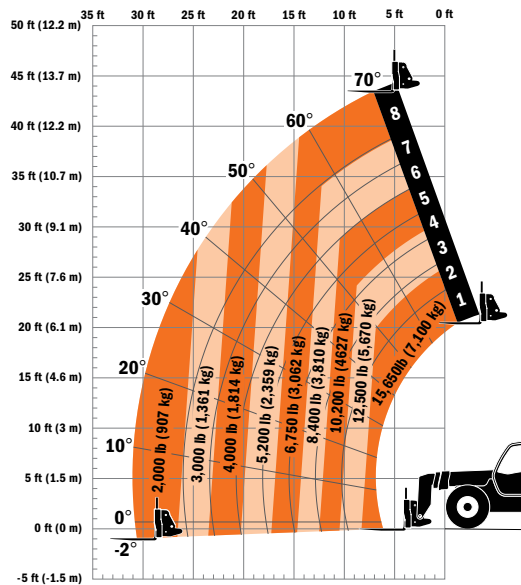


## Dimensions

All dimensions are approximate.



## Load Chart



## The JLG "1, 2 & 5" Warranty

We provide coverage for one (1) full year on the entire machine, two (2) full years or 2,000 hours on the drivetrain and cover all specified major structural components for five (5) years. Due to continuous product improvements, we reserve the right to make specification and/or equipment changes without prior notification.

Part No.: 3132249  
R05182  
Printed in USA



**JLG Industries, Inc.**  
1 JLG Drive  
McConnellsburg, PA 17233-9533  
Telephone 717-485-5161  
Toll-free in US 877-JLG-LIFT  
Fax 717-485-6417  
[www.jlg.com](http://www.jlg.com)

**An Oshkosh Corporation Company**